

Urban GmbH & Co.
Maschinenbau KG
Dornierstraße 5
87700 Memmingen
Phone 08331/858-0, fax 858-58
E-Mail: urban@u-r-b-a-n.com
Internet: http://www.u-r-b-a-n.com

Trust. Right from the start!

January 2024

Information for our customers and business associates

Address

Urban: always at the cutting edge of technology

For Urban GmbH & Co. Maschinenbau KG, the 2023 financial year was characterised by innovations and above all further developments.

"We have once again fine-tuned our CUT welding technology by focusing on the pin milling cutter at the heart of the face milling cutter," says Martin Urban, the company's Managing Shareholder.

With this solution, which is currently awaiting patent confirmation, Urban's welding technology has been made even more suitable than ever before for filigree work. It is now also perfectly attuned to the profile geometries of the future and the new compound materials used by profile manufacturers.

"The industry can look for-

ward to a whole range of innovations, especially for frame and sash materials. The manufacturers will be present these at the Fensterbau/Frontale event in Nuremberg. We can already assure our customers that we are very well prepared," says Urban.

The hit: the SV 830

Urban not only sets the tone in welding, but also in plastering, as demonstrated by the SV 830 weld bead plastering machine, a smaller version of the SV 840. "Our new plastering machine is extremely well received because it processes so quickly. Many customers operate it behind two CUT welding machines or one CUT as well as one conventional two- or four-head

welding machine." Its fast processing times are made possible by the ingenious arrangement of the processing tools and the software-controlled parallel operations.

Celebrating logistics

State-of-the-art window and door manufacturing is utterly dependent on logistics. So wherever professionals want the processes to properly work in practice, they place their trust in Urban's logistics solutions. "We have recently developed a whole range of new solutions in this area in particular. In some projects, we have broken new ground together with our customers. We are all the more honoured by the trust placed in us, in line with the motto: If it

can work with a partner, then it will work with Urban," says a delighted Fred-Karsten Karl from Urban's Sales Department.

New ASR-V

The engineers at Urban have fully redeveloped the ASR-V Compact vertical stacking rack. As the name suggests, its frame and panels are not placed horizontally as with previous solutions, but instead vertically.

"We are literally working in a whole new dimension, because for the first time, we are utilising the height of the hall for stacking elements. This is truly ground-breaking," explains Karl.

Contents

Also in this issue:

Company founder Josef Urban is a private citizen p.2

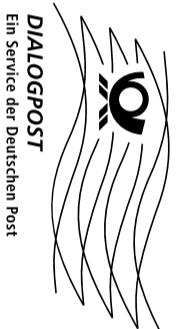
New products at a glance p.2

The new version of the FBA 2500/2-E p.3

Haug + Schöttle gets ready for new profiles p.3

Groß Fenster und Türen: logistics for wood and p.4

Essertec: stacking for smoke ventilation p.4



EDITORIAL

Dear customer,



This year passed so quickly! It's only been six months since the last issue of Urban News, but so much has happened!

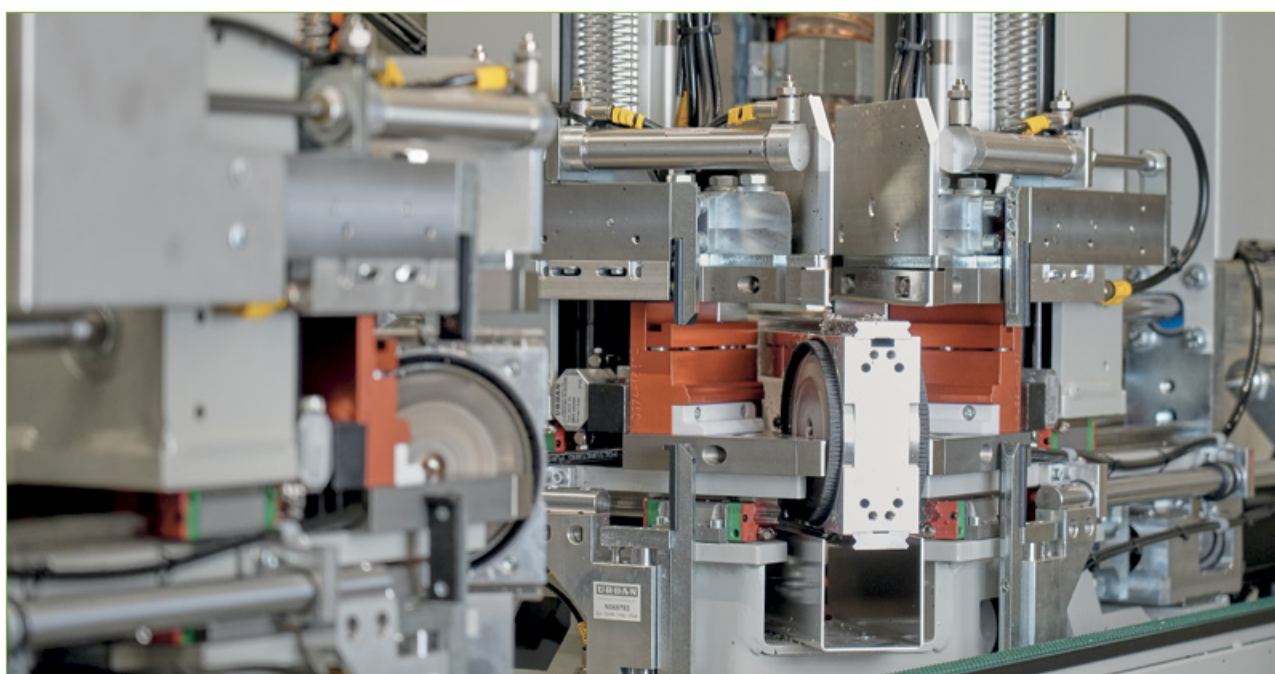
Please find enclosed our new information to mark the start of the 2024 window construction year.

The following pages will show you that there is a lot going on - and of course this is set to continue. After all, Fensterbau/Frontale 2024 will be upon us soon.

Bu before we get going with the new year, I want to sincerely thank much on behalf of our team for the trust you have placed in us in 2023. I also want to take this opportunity to pay tribute to a very special person: our father and the founder of our company, Josef Urban. My brothers Peter, Thomas and I are not the only ones to owe him this much! At the age of 85, our father has now retired from the company as a partner. We would like to take this opportunity to thank him for everything.

We hope you enjoy reading this latest issue of our News.

*Best wishes, Martin Urban
Managing Shareholder*



The modified CUT technology



All the way to the top: the ASR-V-22 Compact tower

The first vertical stacking rack

Now you can really take it to the top with stacking. And in the truest sense of the word. Because the new ASRV-22 compact rack by Urban lets you store your frames and sashes vertically.

"We are creating entirely new opportunities for our customers, especially for those who previously had no option for a buffer because their manufacturing facilities had limited space. We've now made that possible," says Fred-Karsten Karl from Urban's Sales Department.

Vast space gain

The space gained by integrating the new rack is truly vast: the ASR-V-22 Compact

requires just 38 m² of space, whereas the conventional horizontal buffer required 90 m². This means a saving in excess of 60 %.

Double use

And the greatest thing is this: with the new rack by Urban, a hall height from 6.20 m can now include a total of 22 compartments. And each of these, depending on the size of the elements, can potentially be used twice: "This means that our customers can temporarily store 44 panels in the new buffer rack," explains Karl. The maximum element size is 1.60 x 2.80 m (width x height), with a maximum weight of 50 kg per compartment.

And another thing: compared to horizontal stacking, the vertical buffer eliminates the swivelling process, cancelling out any need for a movement process for the panels. This protects the elements from damage, and access times are reduced.

Rounding off the logistics programme

"Vertical stacking really rounds off our logistics programme. It's great that we can now also offer our customers this alternative," says Faruk Polat from the Urban's Sales Department, who helped set up the development project.

Danke, Josef Urban

Josef Urban, der Firmengründer und langjährige geschäftsführende Gesellschafter, ist nun endgültig Privatier.

Im Alter von 85 Jahren hat unser Seniorchef nun auch seine Gesellschafteranteile an seine Söhne Martin, Peter und Thomas übergeben. Diese werden sein Lebenswerk weiterführen und die Urban GmbH & Co. als inhabergeführtes Familienunternehmen weiterentwickeln.

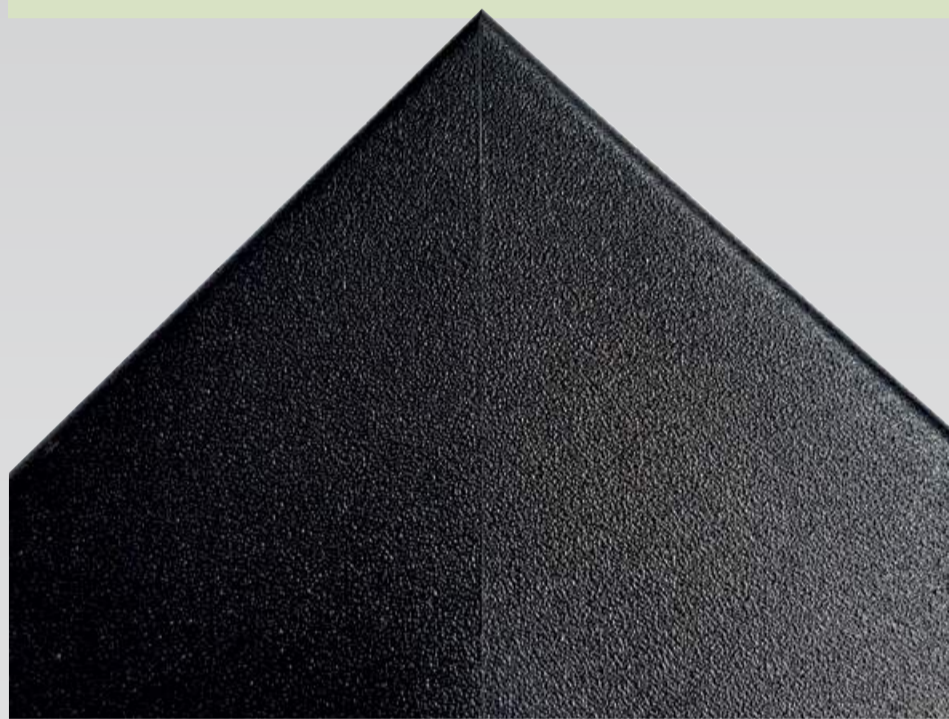
1967 war Josef Urban ei-

ner der Ersten, der Schweißmaschinen für die Fertigung von Kunststofffenstern entwickelte. Seine ersten Ideen waren gleich von Erfolg gekrönt: Denn auf der Bau in München verkaufte er 1970 auf Anhieb sieben Maschinen und wusste von da an: Die Fensterbauwelt ist bereit für Technologie von Urban.

Wir sagen unserem Senior an dieser Stelle noch einmal herzlichen Dank für seinen Mut, sein erfolgreiches Unternehmertum und vor allem auch für seine freundliche und wertschätzende Art,



die ihn sowohl bei Kunden und Geschäftspartnern, aber vor allem auch bei seinen Mitarbeitenden so beliebt machte.



Great edging thanks to back-milling of fibreglass or aluminium racks

CUT-Technologie: Bring on the compounds

Modified pin cutter for new materials

Window manufacturers must always be ready to employ new technologies and even more so new materials. Currently the fashion is for profiles with aluminium cladding or compounds, such as plastic-and-glass profiles or aluminium reinforcements.

Regardless of the inventions of profile manufacturers, ultimately it is the window production process that determines whether a product will succeed or fail. As a result, many profile manufacturers make sure that Urban is involved early on in the development process as a machine supplier.

Very elegant

"We only just completed a test project that took several months whose goal was optimum results when welding the new Elegant window system from Deceuninck with innovative glass fibre technology," says Kenny

Geisler from Urban's Development Team. And we clearly achieved this: "For optimal edging without a visible groove, we had to equip our CUT welding machines with an adapted pin cutter at its centre," says Geisler.

Milling away the problem

Without fibreglass milling, the result was anything but optimal. "The glass fibre rack was in the way of the welding bead, with the results that it sometimes pushed through to the outside a little, making it visible," says Geisler.

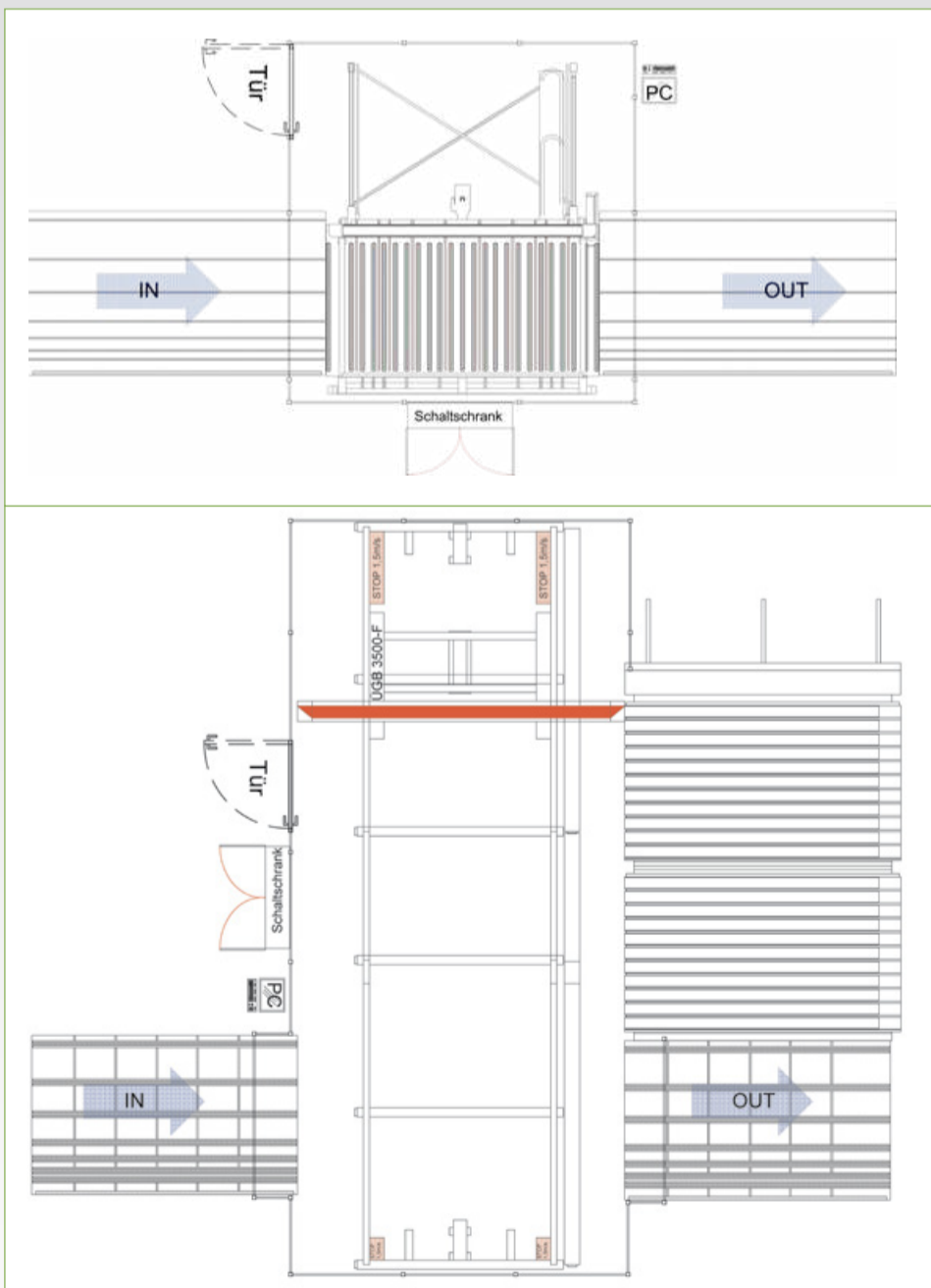
Even the attempt to simply mill the Elegant profiles with the conventional face milling cutter on the CUT machines did not produce the desired result. "There was simply too much wear on the face milling cutter. With the variant with the modified centre milling cutter for the glass fibre, the face milling cutter does not come into contact

with the glass fibre and is protected."

Milling is a must

In any case, Geisler does not recommend processing the glass fibre profiles without back-milling: "This usually fails to produce a harmonious non-bulging corner. An in addition, where compound reinforcements such as aluminium are used inside the profile, back-milling is essential anyway."

In addition to back-milling the compound racks in the welding machine, the team at Urban also recommends back-milling for compound racks during cutting. "Depending on the manufacturing context, this can do plenty to balance out the cycle times," says Martin Urban, Managing Shareholder of Urban GmbH & Co. KG.



25 years of FBA: Here comes the new FBA 2500/2-E

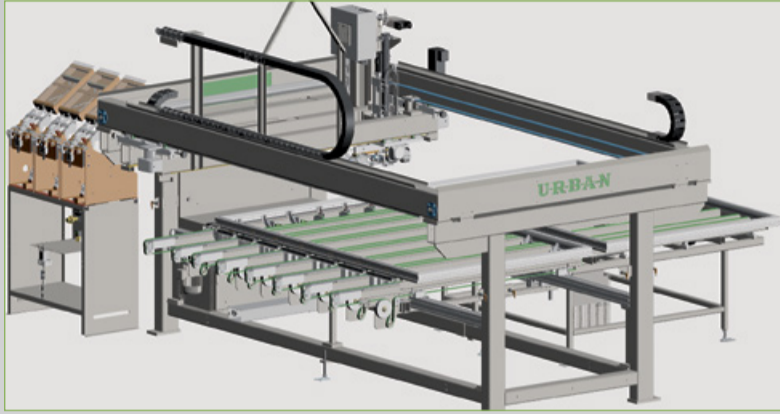
The new automatic sash fitting machine boasts a wide range of innovations

The growing variety of frame materials has meant another innovation from Urban: the new FBA 2500/2-E automatic sash fitting machine, with its whole range of new features. This has been optimised for corner hinges and fitting screw connections.

"It's just right for the 25th anniversary of the FBA. Especially because we presented the first automatic sash fitting machine in 1999," says Martin Urban, Managing Shareholder of Urban GmbH & Co. Maschinenbau KG. The new FBA 2500/2-E is now the third generation and has



The new screw unit



The extended belts increase the support surface and simplify positioning and set-up.

also evolved from the FBA 2500/2 (launched in 2009).

For all materials

While the first FBA generations were designed purely for sash processing of plastic profiles, the new FBA2500/2-E works across all materials, so also with wood, aluminium and all compound profiles.

"The new generation of the FBA is a great success for us. I am very pleased that we can offer our customers the perfect equipment

for the new profile generations, not only for welding and plastering, but also in logistics and further processing. We want to support our customers to be fully in command of all their window and door construction processes," says Urban.

The first FBA 2500 is still running

Incidentally, the first FBA 2500 built by Urban in 1999 is still being used by a window manufacturer in Spain.

The FBA 2500/2-E has the following new features:

Electric drive with servo engine: The new FBA is no longer an impact wrench, but is powered by an electric servo engine with depth and torque cut-off. This can be infinitely adjusted via PC.

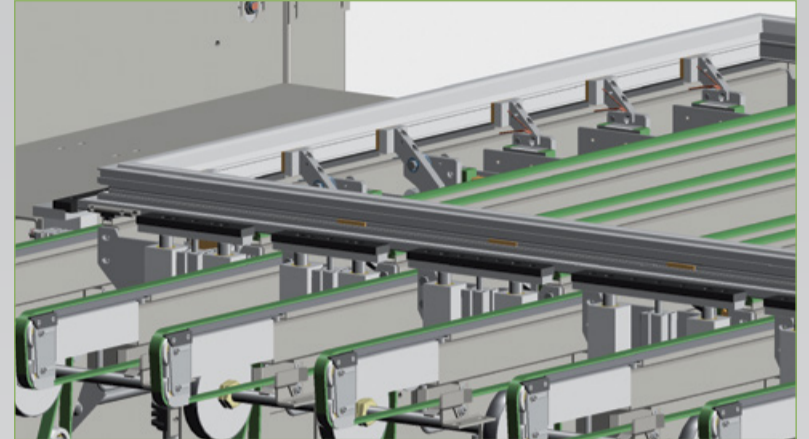
Stepless height positioning: A servo engine implements the stepless height positioning for this impact

wrench. This means that there are no limits to the variety of profiles.

New turning unit: The turning unit of the FBA 2500/2-E has been completely redesigned so that the screwdriver unit can work on all four sides of the sash. It is also rotated using a servo engine and an absolute measuring system.

Individual clamping system: The new FBA 2500/2-E is clamped with a new individual clamping system so that profiles with sensitive surfaces, such as aluminium or wood, can also be fixed and held better.

Larger support surface: The new FBA consists of extended individual belts that protrude beyond the processing table. This allows for a seamless connection to a downstream system and thus also optimises logistics.



The new FBA 2500/2-E from Urban is optimised for corner belt bolting.

Why window manufacturers rely on Urban expertise

All set for the future

Haug + Schöttle in Weingarten invests in CUT technology by Urban

Say goodbye to time-consuming re-colouring of foiled windows and hello to a significant increase in capacity. These were the decisive reasons for the recent new investment in Urban technology by Haug + Schöttle GmbH based in Weingarten.

Managing Director Bernd Roth and his team have replaced the old Urban Singleline with a new CUT welding machine and the new SV 840 two-head plas-

tering machine. Though perhaps replacement is not quite the right word – since much of previous production was integrated into the new line. This includes the AKS 6400, which acts as a placeholder for a second AKS 9600 CUT. The existing FBA 2500/2 automatic sash fitting machine was also reintegrated.

"Foiled windows are booming for us, they already account for 50 % of window production. This made



it all the more important to optimise processes. With Urban's CUT technology, we have a great corner joint without a visible groove. Previously, we had to go to the trouble of re-colouring, like everyone else who didn't have a CUT machine," says Managing Director Bernd Roth.

Increased quality with a reduced team

In Weingarten, the new welding machine by Urban is operated by another new SV 840/6 plastering machine. Its processing heads are having a major impact on processing speeds and replaces the previous SV 530. "This change has enabled us to almost double production," says Roth, who also relies on Urban for logistics.

This is because a buffer system with the Urban transport shuttle and the ASR vertical stacking rack with 52 compartments is integrated into the production process. The four frame workstations are then loaded from there.

"It was important for us to ensure that the elements reach our employees directly. We wanted to avoid long walking distances and lugging the elements around," says Roth. The Managing Director believes

that his company is now ideally equipped for the future of window and door construction.

"We are open to future hybrid systems. The fact that we can back-mill PVC with the CUT welding technology is of course a great advantage. This immensely simplifies the processing of new profile systems," says Roth.

Great news for Roth and his team: the new system was installed in the extension building so that the company

was able to continue production during assembly. "That was perfect for us; overall, we only had one week during which we needed to pause manufacture."

2025 anniversary

The Weingarten site of Haug + Schöttle GmbH can draw on many years of experience in PVC-U window production, as the company will be celebrating its 20th anniversary in 2025.

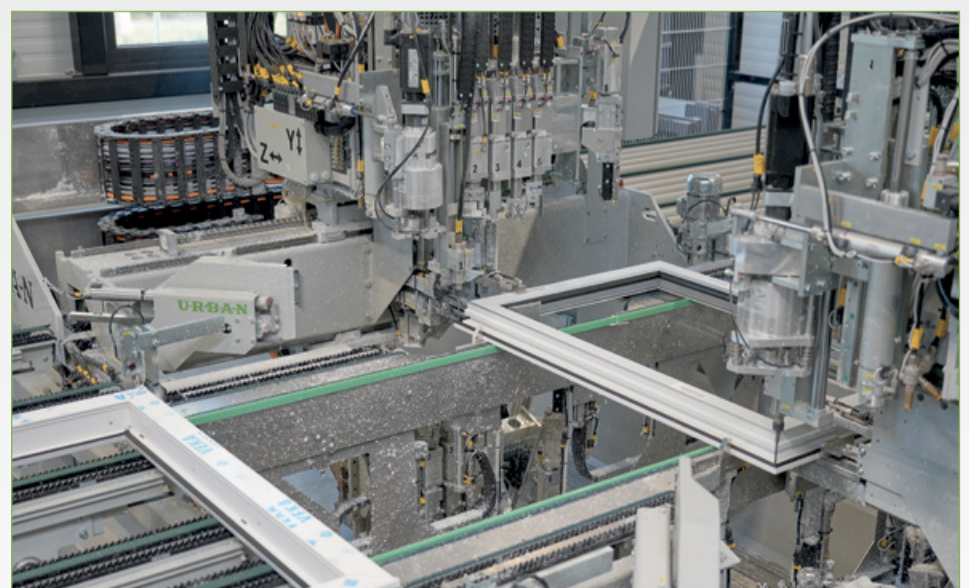


Haug + Schöttle is managed by Hermann Deller

Contact:
+49 8331 858-246
hermann.deller@u-r-b-a-n.com



The CUT system at Haug + Schöttle



The SV 840 in full swing

Why window manufacturers count on Urban's expertise

Perfect logistics – including for wood-and-aluminium

New turn-tilt transport unit optimises processes in wood window production at Groß Fenster und Türen

"No compromises in logistics – not even in wood window production!" So said the window and door manufacturer Groß Fenster und Türen in Salzweg/Straßkirchen in Lower Bavaria.

The two Managing Directors Martin and Johannes Groß quickly asked their specialists at Urban to come up with something, stating the following request: "We wanted the same automatic stacking and glazing station in the wood and wood-aluminium window production as we have had for years from Urban in the PVC window department," says Martin Groß.

The joint project resulted in a new development, solving this particular challenge: "Our wood profiles are fitted with aluminium clips for clipping on the aluminium shells, in very different places. A normal roller conveyor therefore had to be ruled out as a transport solution because the clips were at risk of becoming wedged in the rollers," says Groß.



The solution: Urban adapted its transport shuttle with transfer conveyor and equipped it with a full-surface support surface. In addition, the specialists at Urban developed a new turn-tilt travelling unit so that the transport shuttle could be tilted by +8 and -8 degrees and could also rotate by 180 degrees.

Always correct

"This allows us to ensure that the windows can be automatically rotated from the inside to the outside. This means that the installation of the aluminium shell and other work steps on the outside of the window becomes possible without manual rotation," explains Hermann Deller, Senior Sales Manager at Urban.

The turn and tilt option in the shuttle creates the greatest possible flexibility for large windows and doors.



Moves, tilts and turns: the Urban transport shuttle at Groß Fenster und Türen in Straßkirchen.

"We glaze the wood windows from the inside and the wood-aluminium windows from the outside. This functionality helps us immensely," says Martin Groß.

Urban has long been the technology partner par excellence for Groß Fenster und Türen. "There are good reasons why we have two welding machines with the new CUT technology and a two-head plastering machine type SV 840 by Urban as part of our PVC

production. They are that the logistics solution in the PVC hall has proven its worth for many years. And it was clear to us that we would also find a good solution for optimising logistics in the wood and wood-aluminium area together with Urban," explains senior partner Martin Groß.

Groß Fenster und Türen near Passau has been justly famous for its high-quality products for 120 years now. Within a radius of 40 kilo-

metres, the Groß team also conducts end-customer business including installation; the company generates the majority of its turnover through trade.

Groß Fenster und Türen is managed by



Hermann Deller

Contact:
+49 8331/858-246
hermann.deller@u-r-b-a-n.com



Andreas Pauls

Contact:
+49 8331/858-270
andreas.pauls@u-r-b-a-n.com

Flat roof windows and smoke vents are also stacked

Urban distribution buffer system at Essertec in Grevenbroich

Urban's expertise is not only in demand for window and door production. This has been shown by Essertec GmbH, based in Grevenbroich near Düsseldorf.

The company is one of the leading suppliers of flat roof windows, skylight domes and smoke and heat extraction solutions.

No more carrying

In order to take away the need to transport the individual elements by hand from A to B, the company was looking for an automatic stacking.



Thankfully, Production Manager Michael Oeldemann has a background in window construction and was already familiar with Urban's logistics solutions.

"I had already implemented



Essertec specialises in daylight and smoke extraction systems for flat roofs.

several projects with Fred-Karsten Karl in the past, so I was aware of his expertise. It was obvious to me that if anyone was going to have an idea, it would be him," Oeldemann confirms. And he wasn't wrong.

"We simply adapted our distribution buffer system for automatic stacking. One of the biggest challenges was programming. After all, in window production, every sash and every frame has its own barcode. At Essertec, we first had to get the different elements into the sys-

tem," says Fred-Karsten Karl.

Test passed

Before getting down to business, Oeldemann and Karl conducted a test:

"We took our elements to a window construction company in Magdeburg to test whether the distribution buffer system installed there would be able to cope with our products. That worked quite well. This crystallised for us that we would be

able to tackle the project," says Michael Oeldemann.

He is delighted to have found in Urban a partner prepared to break new ground. "Something like this only works if everyone involved pulls together and is prepared to step out of



Essertec is managed by Fred-Karsten Karl

Contact:
+49 8331/858-0
fred-karsten.karl@u-r-b-a-n.com

their comfort zone," says the production manager.



The elements are stacked automatically, thus making the best possible use of Urban's expertise.